

Wrexham Association Football Club Limited

President : Major F. EVELYN SOAMES.

DIRECTORS :

Chairman—ALDERMAN E. A. McMAHON; *Vice-Chairman*—I. EVANS ;

J. T. DAVIES, T. H. DODD, J. R. NICHOLAS, H. G. PHILLIPS,

F. J. TOMLINSON, T. E. WILLIAMS.

Manager—JOHN T. LOVE.

Secretary—CLIFFORD LLOYD.

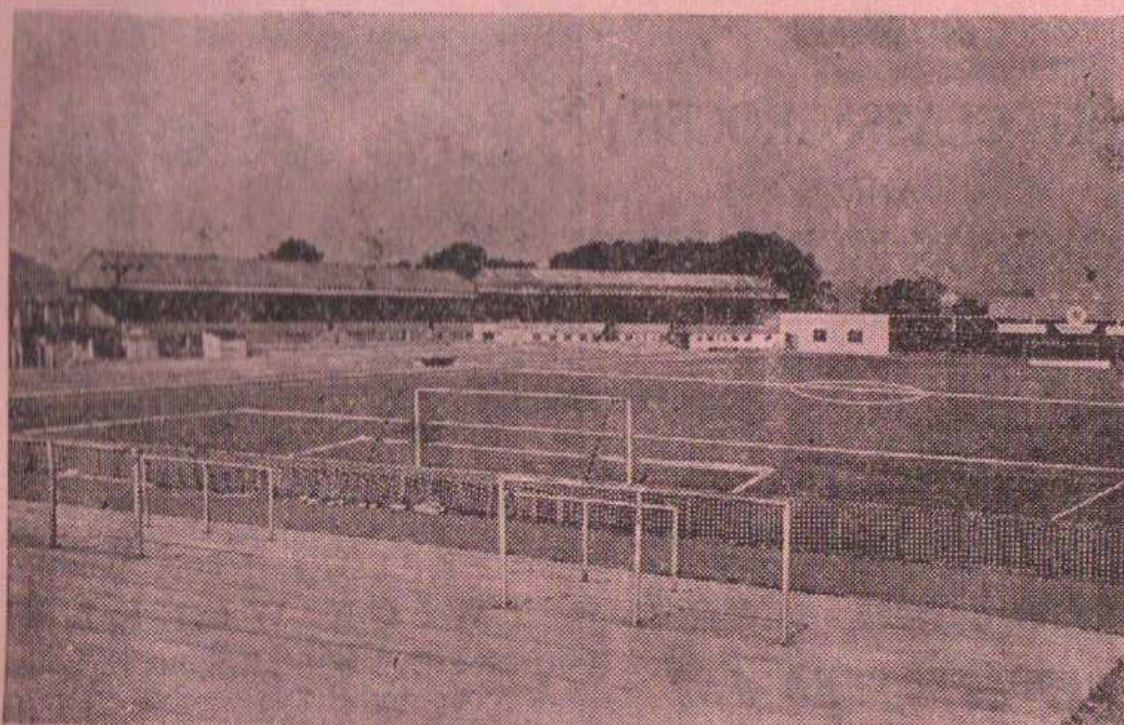
Ground—RACECOURSE, WREXHAM.

Telephone—2414.

Official Programme

SATURDAY, DECEMBER 20th, 1958.

Price—3d.



Photograph by courtesy of "*Wrexham Leader*."

Wrexham
v.
Swindon T.

Nº 3961

KICK-OFF 2-30 P.M.

*Published by the Wrexham A.F.C. Supporters' Association, and
Printed by Jones & Williams, 14, Regent Street, Wrexham.*

YOUR NEAREST CHEMIST.

For all Medical and Surgical Requisites.

Agents for Perihel, Hanovia and Barber Sunray Lamps.

Emlyn Jones

CHEMIST & OPTICIAN

REGENT STREET, WREXHAM.

**J. T. Davies
& Son**

HIGH - CLASS GROCERY
AND
PROVISION MERCHANTS

BAKERS AND
CONFECTIONERS

**Rhosddu Road,
WREXHAM**



The Players look all the same to her—but there's something different about the "**LEADER**" now published
TWICE WEEKLY

On the Ball with all Sport reporting.
A comprehensive news service.
Wrexham Leader Tuesday & Friday.

THE UNITED CO-OPERATIVE LAUNDRIES
ASSOCIATION LIMITED

SPECIALIZE IN

LAUNDRY and DRY CLEANING
FOUR - DAY SERVICE.

We have a number of Shops within the Wrexham area.
DIVIDEND on all WORK PAYABLE through your LOCAL CO-OPERATIVE SOCIETY

FEED YOUR INSIDE RIGHT ! ! !

Have a really GOOD MEAL or LIGHT REFRESHMENTS in comfort at

THE HOMESTEAD CAFE AND SNACK BAR, CHARLES STREET, WREXHAM.

Tel.: Wrexham 2855.

Before or After the Match.



::

Or Any Other Time ! ! !

The football for to-day's game has been kindly given to the Club by Mr. C. T. Clark, King's Mills Garage, Wrexham. If you are thinking of buying a new car why not visit the garage where you will be shown the very one you desire.

SECRETARY'S NOTES.

WE extend a warm invitation to new friends when Swindon Town visit the Racecourse this afternoon, and hope to reverse our opening match of the season when Swindon were victorious by one goal to nil.

Last Saturday turned out to be a disastrous one from our point of view, when Tranmere Rovers trounced us to the tune of 5—2. This was our first home defeat in a League match on a Saturday since Gateshead beat us by two goals to one on the 31st August, 1957. Let us not detract from Tranmere's performance—they adapted themselves better to the conditions than our "boys," and on the day's play thoroughly deserved their victory. Let us hope that our team learned their lesson on a heavy ground and that it will prove a blessing in disguise.

The Cheshire League team continue to make headway, and a win of 3—1 at Stalybridge Celtic keeps them well up with the leaders. Our goals in this game were scored by Bernard Evans (2), and Don Weston.

The Colts team were hammered by six goals to one at Colwyn Bay, where the heavy ground proved too much for our young players.

I would like to remind you of our Christmas fixtures. On Christmas Day we have no game at the Racecourse, but on Boxing Day, Chester Reserves visit us in a Cheshire League game—kick-off being at 2.30 p.m. On Saturday, 27th December we have a home game against Chesterfield, when the kick-off will again be at 2.30 p.m.

Finally, on behalf of everyone connected with our Club, I would like to wish each and everyone of you a very Merry Christmas and a Happy and Prosperous 1959.

FIXTURES. THIRD DIVISION.

			F.	A.
1958.				
Aug.	23—Swindon T.A	0 — 1	
"	27—Notts C.H	3 — 2	
"	30—BrentfordH	2 — 1	
Sept.	4—Notts. C.A	0 — 2	
"	6—Hull CityA	0 — 1	
"	10—Newport C.H	0 — 0	
"	13—Bradford C.H	3 — 3	
"	18—Newport C.A	1 — 2	
"	20—Stockport C.H	3 — 1	
"	22—Mansfield T.A	1 — 3	
"	27—SouthamptonA	2 — 1	
Oct.	1—Mansfield T.H	2 — 1	
"	4—Accrington S.H	2 — 2	
"	11—Colchester U.A	1 — 1	
"	18—BournemouthH	1 — 0	
"	25—Norwich C.A	2 — 2	
Nov.	1—Southend U.H	3 — 1	
"	8—BuryA	0 — 3	
"	15—(1) DarlingtonH	1 — 2	
"	22—Plymouth A.A	2 — 2	
"	29—Doncaster R.H	2 — 1	
Dec.	13—Tranmere R.H	2 — 5	
"	20—Swindon T.H	
"	26—ChesterfieldA	
"	27—ChesterfieldH	
1959.				
Jan.	1—Tranmere R.A	
"	3—BrentfordA	
"	10—(3) Queen's P.R.H	
"	17—Hull CityH	
"	24—(4) RochdaleA	
"	31—Bradford C.A	
Feb.	7—Stockport C.A	
"	14—(5) South'tponH	
"	21—Accrington S.A	
"	28—(6) ColchesterH	
Mar.	7—BournemouthA	
"	14—(S.F.) NorwichH	
"	21—Southend U.A	
"	27—ReadingH	
"	28—BuryH	
"	30—ReadingA	
April	4—Queen's P.R.A	
"	11—Plymouth A.H	
"	18—Doncaster R.A	
"	22—Halifax T.H	
"	25—RochdaleH	
"	—Halifax T.A	

Pool Bank and Wrexham Dairies Limited

'Phones: 2741 and 2591.

Finest Quality Milk
JERSEY, T.T. AND
PASTEURISED.

TRY OUR
Double Thick Cream.

PLACE YOUR ORDER
WITH THE ROUNDSMEN.

COOPER & DAVIES

CENTRAL ARCADE,
HOPE STREET, WREXHAM.

*Ladies' Hair Stylists,
Cosmetics,
Toilet Requisites, etc.*

Open All Day Wednesday.

GIFTS for ALL OCCASIONS

LARGE SELECTION of
CHRISTMAS GIFTS

Tel. No.: Wrexham 3354.

CONSULT US - - WE ARE FURNISHING EXPERTS.

The QUALITY remains—

—Long after the PRICE is forgotten.

HYLTON BOWEN (FURNISHERS), LIMITED,
Centenary Buildings, 16 & 17, KING STREET, WREXHAM.

SUPPORTERS' CLUB NOTES.

(By "CEE TEE.")

AFTER keeping our record of not having lost a league game for 12 months it was badly shattered last Saturday by our bogey team, Tranmere. It is no use crying over spilt milk, for they definitely showed us how to move the ball in the mud and to some purpose! However, much experience can be gained by defeat and we are certainly not despondent, it had to come sooner or later.

To-day we extend a great welcome to our visitors from Swindon on this their first visit to the 'Course. Let them be warned, however, that our team are not so easily beaten as last week's game suggests, but I expect they will realise this after their tough fight earlier on this season.

Congratulations to our Reserve team on the good win last week; they are certainly hitting the high spots these days. So once again let us help the boys on to another long run of success by giving them all the vocal support we can. REMEMBER—"CHEER IS BEST."

DENBIGHSHIRE CONSTABULARY (Traffic Department).



This Space has been kindly donated by
Messrs. Lloyd Evans & Son, Ltd., Building Contractors, Wrexham

YOUR OWN
Materials Made Up.
E. SHELBORN,

Tailor to the Town,
46, BRIDGE STREET,
WREXHAM.

FUNERAL ORDERS
PROMPTLY EXECUTED.

WRIST WATCHES
CLOCKS
WATCH AND JEWELLERY
REPAIRS.

STOP WATCHES
AND RACE TIMERS.
WEDDING and
Engagement RINGS
Wedding Presents

HORTONS
5-6, CHURCH ST., WREXHAM



football fans read

NEWS
OF THE
WORLD

expert reports



Memorial Craftsmen for over half a century

J. W. EDWARDS

Proprietor
Eric Edwards

137, Ruabon Road, Wrexham.

Opposite Cemetery Main Gates Tel. 3502.
Largest Stock & Display in Wrexham & District
8 a.m. to 5 p.m. Sats. 8 a.m. to 4 p.m.
and at 36, Market Street, Rhos.

RIGHT.

(Colours—Red Shirts with W

WREXHAM

UGOL

2
McGOWAN

4
McNAB

7 **JONES (G. A.)** **8** **ANDERSON**

D. W

REFEREE—

Mr. T. H. COOPER, Bolton.

LINESMEN—

Red Flag—

Mr. R. J. Williams, Birkenhead.

Orange Flag—

Mr. E. J. Goodwin, Stoke-on-Trent.

11
DARCY

10
EDWARDS

9
KELLY

6
OWEN

5
HUDSON

3
BINGLEY

1
BURTON

SWINDON

LEFT.

(Colours—Red with V

Drink and
enjoy . . .



BORDE

ELECTRICAL RADIO THORNTON'S

TELEVISION SPECIALISTS,

Regent St.

Brook St.

'Phone: Wrexham 2510.

th White Collars, White Shorts).

LEFT.

X H A M

GOLINI

³
JONES (K. B.)

⁵
FOX

⁶
EVANS

⁹
D. WESTON

¹⁰
BANNAN

¹¹
CRIPSEY



Next Home Match, Fri., 26th Dec.,
Cheshire League. Kick-off 2.30 p.m.

Wrexham v. Chester

Saturday, 27th December, 1958—
Division Three. Kick-off 2.30 p.m.

Wrexham v. Chesterfield

⁹
LLY

⁸
RICHARDS

⁷
CORBETT

ON

⁴
MORGAN

²
NEAL

RTON

ON TOWN

with White Edging).

RIGHT



the . . .
popular beer

EVERYTHING FOR THE HANDYMAN.

Joinery, Turnery, Mouldings,
Beatings, Plywoods, Hardboards,
Ironmongery, etc.

H. WAYNE SANDERS,
LIMITED,

24, Bridge Street. Wrexham.

KNOWLES & CO.

(Wrexham), Ltd.,

(Tom W. Williams).

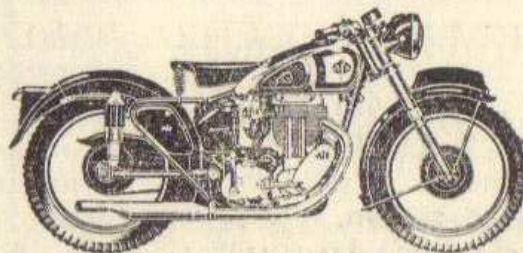
56, Chester Street, Wrexham.

'Phone: 2193.

*Complete Sports
Outfitters.*

Suppliers to F.A. of Wales,
Wrexham F.C. and all
Leading Football League
Clubs.

JACK WILKINSON,
MOTOR CYCLE SPECIALIST.



Appointed Dealer & Spares Stockist
for A.J.S., Triumph, Royal Enfield,
Matchless, Francis Barnett.

Opposite Odeon, Wrexham.

'Phone—Wrexham 2642.

THE BON

E. R. HUGHES

Telephone 2686

Gentlemen's
Outfitters

Town Hill - - - Wrexham

SHORT HISTORY OF SWINDON TOWN A.F.C.

SWINDON TOWN A.F.C. was founded in the year 1881 by the Rev. W. Pitt for the benefit of the young men of his parish and became a professional Club in 1894 when they joined the Southern League, but in 1921 became one of the original members of League, Division III. They are known as "The Robins" from their colours of red shirts with white collars and their ground record stands at 28,400.

NOTES ON SOME OF OUR VISITORS.

SAM BURTON (*Goalkeeper*).—Product of local football. Joined Swindon in 1945. Ever-present last season.

JOHN NEAL (*Right Back*).—Signed from Hull City. A keen tackler, fast in recovery. Has been a professional sprinter.

WALTER BINGLEY (*Left Back*).—Born in Sheffield. Signed in early 1958 season, ever-present since. Came from Sheffield Wednesday, was with Bolton previously.

GEORGE HUDSON (*Centre Half*).—Became a Swindon player in September, 1948. A native of Havant (Hants.), was a professional with Portsmouth before joining the "Robins."

MAURICE OWEN (*Left Half*).—Born in Abingdon. After signing for Swindon in 1947 was the target for many offers from Clubs in the first Division, two of them being Wolves and Arsenal.

JOHN RICHARDS (*Inside Right*).—Signed from the Army during 1957-58 season. A goal-scoring inside forward. Last season was top goal-scorer with 17.

JAMES KELLY (*Centre Forward*).—Signed from Preston North End at the start of the 1958 season and completed the last 11 games of the season.

BOB EDWARDS (*Inside Left*).—Last season was second highest goal-scorer with 15 goals. He was ever-present last year. He joined Swindon in 1956 from Chelsea.

ARNOLD DARCY (*Outside Left*).—Born at Blackburn. Secured from Wigan Athletic during 1956-57 season. Ever-present last year. Played as an Amateur for Accrington Stanley.

THE LEAGUE.—Division III.

	P.	W	D.	L.	PTS.
Plymouth A.	22	13	7	2	33
Hull C.	23	13	4	6	30
Southampton	22	9	8	5	26
Reading	22	9	8	5	26
Tranmere	22	10	6	6	26
Southend	23	10	6	7	26
SWINDON T.	21	10	5	6	25
Brentford	22	9	7	6	25
Colchester	21	9	6	6	24
Bury	22	8	7	7	23
Accrington S.	22	8	7	7	23
Newport C.	22	9	5	8	23
Bournemouth	23	10	2	11	22
WREXHAM	22	8	6	8	22
Queen's P'k R.	22	8	6	8	22
Halifax	20	10	1	9	21
Norwich	21	6	7	8	19
Bradford C.	22	6	6	10	18
Mansfield	20	7	4	9	18
Chesterfield	22	5	7	10	17
Stockport	23	6	5	12	17
Notts C.	22	3	10	9	16
Rochdale	22	3	5	14	11
Doncaster R.	22	5	1	16	11

Cheshire County League.

	P.	W	D.	L.	PTS.
Northwich V.	19	11	3	5	25
Port Vale Res.	19	11	3	5	25
Bangor C.	19	11	2	6	24
Ellesmere P. T.	15	10	3	2	23
WREXHAM RES.	17	10	2	5	22
Rhyl Athletic....	17	8	5	4	21
Tranmere Res.	19	9	3	7	21
Chester Res.	18	10	1	7	21
HYDE U.	16	10	0	6	20
Winsford U.	18	7	4	7	18
Buxton	14	7	3	4	17
Runcorn A.	17	6	5	6	17
Witton A.	18	6	4	8	16
Stafford R.	17	6	4	7	16
Altrincham	20	5	4	11	14
Congleton T.	19	5	3	11	13
Crewe Res.	18	3	6	9	12
Macclesfield	18	4	2	12	10
Stalybridge C.	19	4	2	13	10
Mossley	17	4	1	12	9

HALF-TIME SCORES.

A—Notts F. v. Wolves

B—Barnsley v. Cardiff C.

C—Brighton & H. v. Middlesbro'

D—Bristol R. v. Leyton O.

E—Grimsby T. v. Liverpool

F—Ipswich T. v. Scunthorpe U.

G—Rotherham U. v. Bristol C.

H—Swansea T v. Sheffield W.

I—Bradford C. v. Brentford

J—Doncaster R. v. Tranmere R.

K—Halifax T. v. Chesterfield

L—Torquay U. v. Chester

FOR EVERYTHING IN
POTTERY & GLASSWARE

MAKE

J. C. ROBERTS AND SON,
HENBLAS STREET,
WREXHAM.

your "GOAL"

Our HIRE SERVICE is
always at YOUR SERVICE

For Anything in WOOD :
WREXHAM SAWMILLS
(B. Moss).

RIVULET RD., WREXHAM.
Tel.—3 7 7 5.

Suppliers of Home-grown Timbers
sawn or in the log.

And at LLANDEGLA
Tel.: 204.

FIXTURES.

CHESHIRE COUNTY LEAGUE.

			F.	A.
1958.				
Aug.	23—Tranmere R.H	2	— 1
„	28—RhylA	1	— 2
„	30—MossleyA	4	— 3
Sept.	3—Crewe A.H	Abandoned	
„	6—Northwich V.A	2	— 1
„	10—Stafford R.A	1	— 2
„	13—RuncornA	0	— 4
„	20—Tranmere R.A	1	— 3
„	27—Winsford U.H	3	— 1
Oct.	4—AltrinchamA	2	— 1
„	11—AltrinchamH	3	— 0
„	18—Congleton T.A	1	— 1
„	25—RhylH	5	— 0
Nov.	8—MossleyH	2	— 2
„	15—MacclesfieldA.	3	— 4
„	22—Bangor C.H	3	— 2
„	23—Conglet'n(C.Cup)	A	1	— 1
Dec.	6—Northwich V.	H	3	— 0
„	13—Stalybridge C.A	3	— 1
„	20—Hyde U.A		
„	25—ChesterA		
„	26—ChesterH		
„	27—Ellesmere P.T.	A		
1959.				
Jan.	3—Congleton T.H		
„	10—Bangor C.Away		
„	17—	A		
„	24—Stafford R.H		
„	31—BuxtonH		
Feb.	7—Witton A.H		
„	14—Challenge Cup (3rd Rnd).			
„	21—Port ValeH		
„	28—BuxtonA		
Mar.	7—Stalybridge C.H		
„	21—Hyde UnitedH		
„	27—			
„	28—Crewe A.A		
„	30—Witton A.A		
April	4—Ellesmere P.T.H		
„	11—Winsford U.A		
„	18—RuncornH		
„	—Macclesfield	H		
„	—Port ValeA		

Jones & Williams

PRINTED & WELL

14, Regent St.
Wrexham.



DELIVERED QUICKLY

WREXHAM'S LEADING SEEDSMEN. WALTON & Co.,

(Wrexham), Ltd.,

18, CHARLES STREET

AND

58, CHESTER STREET.

Tel.: 2126.

For all your Garden "Needs."

also

WREATHS, BOUQUETS, ETC.

made to order.

WITH FRESH CUT FLOWERS.

NORTH WALES CO-OPERATIVE BAKERY SOCIETY LIMITED

produce

BREAD OF GOOD TASTE

FURNITURE REMOVAL

Local and Any Distance.

Free Estimates.

THOMAS BROS.

(Removals)

Furniture Removers

50, SALOP ROAD,
WREXHAM.

Tel.: 2670.

For FISH and CHIP MEALS try—

Turner's Fish Cafe

Established Over 68 Years.

OPEN ALL DAY UNTIL 6 P.M.

ONLY ONE ADDRESS—

17 ABBOT STREET, WREXHAM

Border Breweries.

BEFORE and AFTER the MATCH
VISIT

E. (TINY) PARSONS

AT THE

**Feathers
Hotel**

LOUNGE - MUSIC - DARTS

SNACKS SUPPLIED.

**Chester Street,
Wrexham**

WHY NOT TRAVEL TO

AWAY MATCHES

WITH THOSE WHO

TAKE THE TEAM

TRY

**Phillips'
Coaches**

RHOSTYLLEN

Telephone—Wrexham 2092.

For WINTER WARMTH

TRY OUR

**BEST STAFFS and
NORTH WALES COALS**

Anthracite, Phurnacite, Coalite
and all Smokeless Fuels.

J. Saunders & Sons, Ltd.

HILL STREET, WREXHAM.

Tel.: 3943.

JACKSON

Refrigeration Service.

**20, BRIDGE STREET,
WREXHAM.**

COMMERCIAL & DOMESTIC
APPLIANCES.

Telephone—2148. Night—2420.



STANLEY MATTHEWS

FOOTBALL BOOTS

• They're
Streamlined !

• They're
Lightweight !

• They're
Special !

An Announcement of

Wrexham Co-operative Society Ltd.

SUPPORT THE LADIES' SECTION :

WHIST DRIVE every Monday Evening

In the GYMNASIUM at the RACECOURSE GROUND,
at 7.30 p.m.

Admission - - - - - 2/-

S.K. Williams Ltd

Rainbow Stores,
50, HOPE STREET,
WREXHAM.

For Your Supplies of—
Wines & Spirits

Telephone—2751

